



Sustainability Simplified™

Sustainability isn't just a word we use. It's a word we live. Everyday, in everything we do. At Newalta, sustainability is about the integration and alignment of three key elements known as the 3 Es. Environmental, Economical, and Ethical. Because by combining environmental stewardship, economic viability and an ethical approach to running our business, we've done more than make the processing and treatment of waste easier than ever for our customers. We've earned a place as a leader in the environmental energy services sector. It's what we like to call Sustainability Simplified™.



Newalta is in the sustainability business. We use innovative technologies and processes to recover valuable products from oilfield waste streams.

With corporate offices in Calgary, Alberta and Denver, Colorado, we serve our customers onsite directly at their operations and through a network of locations throughout North America.

Our modular processing solutions are designed to serve our customers close to their activities at reduced costs. These solutions represent the next phase in processing of oilfield waste recycling.

LEADERS IN OILFIELD WASTE MANAGEMENT

For more than two decades Newalta has been a leader in the responsible management of oilfield waste streams.

Our goal is to maximize the recovery of valuable resources, including crude oil and water, which reduces the volume of materials that requires disposal. Each year we recover more than two million barrels of crude oil from our customers' drilling, completions and production operations.

We hold ourselves to the highest safety and environmental performance standards. We enjoy an enviable track record of success with our operating facilities. Our culture of safety and environmental stewardship is supported by talented people working as a team with state-of-the-art equipment, detailed operating procedures and robust EH&S programs.

While other companies look to build new, large-scale facilities in oil and gas production areas, Newalta is leveraging our current network of well-established facilities and putting a focus on modular processing solutions.

By introducing these smaller modular solutions, we are able to reduce the volumes of waste for our customers by processing materials closer to the source and transporting lower volumes of materials. Such facilities also allow us to extend our service network into new areas without causing a major disturbance in the local community.

MODULAR PROCESSING SOLUTIONS

WHAT IS A MODULAR PROCESSING SOLUTION?

Newalta pioneered the development of modular processing solutions to treat oilfield waste streams for customers. We design and build each facility to be scalable and adaptable. This allows us to best serve unique customer challenges and adapt to changing market conditions.

These modular solutions have a much smaller footprint than other waste management facilities. They typically consist of an unloading area, a centrifuge, a truck flush station and a tank farm for collecting processed materials. One such example is a strip site we developed for Anadarko Petroleum Corporation in the DJ Basin in Colorado. For this customer we treat their waste streams directly in their operating area.

Such locations extend our facility network allowing us to collect and process materials closer to drilling and production locations. This type of facility is also capable of supporting a disposal well or even a landfill where necessary.

BENEFITS OF MODULAR PROCESSING SOLUTIONS

Modular design

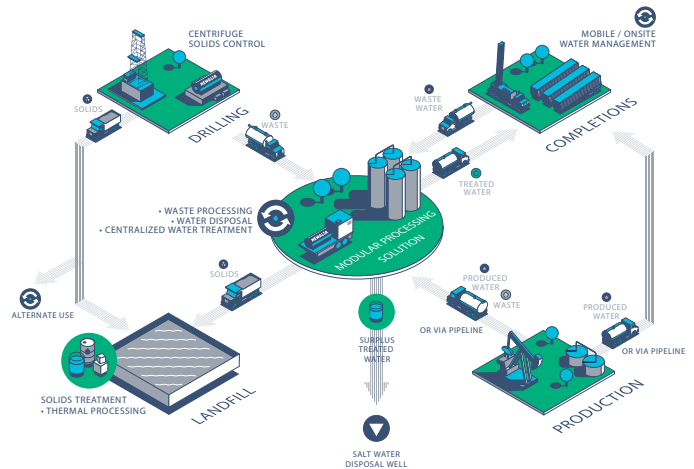
Our solutions are modular which means they can be built relatively quickly without major disruption to the local area. Their smaller geographic footprint also minimizes their environmental impact when compared to a full-size processing facility.

Such solutions are also transportable in nature. The modular construction allows Newalta to decommission and redeploy the equipment in other locations, and the site can be easily remediated and restored.

Reduced trucking distances and traffic

Full-size waste processing facilities attract a large volume of truck traffic. Modular processing solutions allow Newalta to collect materials in a location specifically chosen because of its close proximity to the drilling and production locations.

At our locations we are able to perform primary processing which significantly reduces the volumes of materials that need to be transported. The results are reduced trucking costs, mitigated traffic and a reduced carbon dioxide emission as the trucks are not traveling long distances to the full-size facilities.



Modular processing solutions enable Newalta to reduce the volume of oilfield waste being transported as we process materials closer to or directly at source.



The solutions are modular so they are built relatively quickly with limited disturbance to a community and minimal impact on the environment.



Newalta's modular processing solutions are located near or directly on our customers' oil and gas drilling and production operations to minimize trucking distances.